

SOLUTIONS ALUMINUM

877.507.7555 / fastenal.com **FASTENAL®**



Maximize time on the job with products designed for high performance cutting, grinding, cleaning and finishing on aluminum and other soft metals.

WEILER®

ALUMINUM

Aluminum is durable, offers incredible strength for its weight, and is naturally resistant to corrosion. These attributes make it an attractive option when determining what material to use in metal fabrication.

Aluminum can be a challenging metal to work with because of its low melting temperature and tendency to load on abrasives, making them less effective. Choosing the right abrasive when working with aluminum can eliminate weld defects, maximize productivity and reduce overall consumable spend.

ALUMINUM WELD DEFECTS REDUCE STRUCTURAL INTEGRITY

WELD POROSITY

PROBLEM: Reduced weld strength and lower fatigue resistance.

CAUSE: Hydrogen gas dissolved in the molten weld.

SOURCE: Moisture, grease or other hydro-carbons in weld zone.

SOLUTION: **How to minimize weld porosity.**

Prior to welding, remove all surface contaminants including grease, oil, dirt or paint that can generate hydrogen gas or interfere with weld fusion. Use only high quality, contaminant-free products for surface prep and inter-pass grinding.

OXIDE INCLUSIONS

PROBLEM: Reduced weld strength and lower fatigue resistance.

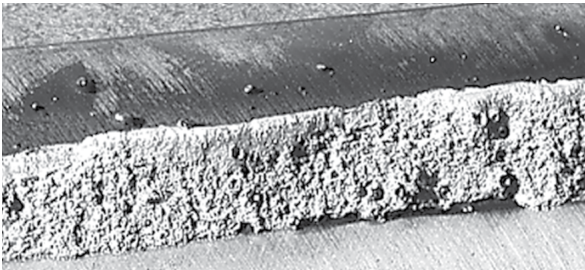
CAUSE: Aluminum oxide is not destroyed in the welding process.

SOURCE: Natural-occurring aluminum oxide on material prior to welding.

SOLUTION: **How to minimize oxide inclusions.**

Remove the thin, tough, transparent film of aluminum oxide from the metal surface. This process should be done just before starting the weld. Use only high quality, contaminant-free products for surface prep and inter-pass grinding.

SEE THE DIFFERENCE



Aluminum weld without proper weld preparation exhibits porosity, resulting in an unacceptable weld.



Aluminum weld with proper weld preparation shows no pores.

HOW ALUMINUM IS DIFFERENT FROM STEEL

INCLUSIONS: The oxide which occurs naturally on steel is destroyed during the welding process. Aluminum oxide is not destroyed during aluminum welding and must be removed prior to welding.

HEAT EXPANSION: When heated, aluminum expands twice as much as steel. As a result, warping and bending are significant issues.

ELECTRICAL CONDUCTIVITY: Since aluminum conducts electricity better than steel, welding parameters like amperage must be adjusted for different conductance.

RFD'S FOR GRINDING, BLENDING & FINISHING

Tiger Aluminum coated abrasive resin fiber & blending discs are **resistant to loading** so you can get the most demanding aluminum jobs done right and done fast.



Tiger Aluminum is specifically designed for high performance grinding on aluminum and other non-ferrous metals. Top coated, Tiger Aluminum releases a lubricant while grinding, reducing heat buildup. Lower grinding temperatures delay melting and prevent the disc from loading, which results in higher cut rates, long life and a superior finish.



APPLICATIONS: Heavy Stock Removal, Edge Chamfering, Weld Blending, Grinding and Surface Finishing

TIGER ALUMINUM RESIN FIBER DISCS / Aluminum Oxide / Non-Loading on Non-Ferrous Metals

Specifically designed for high performance on ALUMINUM and other non-ferrous metals. A top coating grinds cool and is resistant to loading, which results in higher cut rates, long life and a superior finish.

Diameter	Grit Size	Standard Pack	MFG # 7/8" Arbor	FAST # 7/8" Arbor	MFG # 5/8"-11 Hub	FAST # 5/8"-11 Hub
4-1/2"	36	25	60401	0880934	60601	0880935
	60		60403	0880938	60603	0880939
	80		60404	0880940	—	—
5"	24	25	60410	0880944	—	—
	36		60411	0880946	60611 •	0880947 •
	80		60414	0880952	—	—
7"	36	25	60421	0880958	—	—
	60		60423	0880962	—	—

Do not exceed maximum RPM of back-up pad.



0880939



0880962

TIGER ALUMINUM BLENDING DISCS / Aluminum Oxide / Non-Loading on Non-Ferrous Metals

Weiler's cloth backed coated abrasive blending discs are designed for use on right angle air tools. Available with either a metal hub or a plastic button fastening system, the flexible back-up pads give the discs a great deal of conformability.

Diameter	Grit Size	Standard Pack	MFG # Type S Hub	FAST # Type S Hub	MFG # Type R Hub	FAST # Type R Hub
2"	36	50	59869	0868193	59806	99061584
	60		—	—	59807	0811788
	80		59871	99061594	—	—
3"	36	25	—	—	59811	99061587
	60		59875	99061597	59812	99061588
	80		59876	99061598	59813	99061589

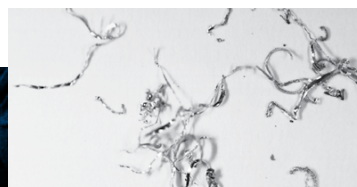


99061584

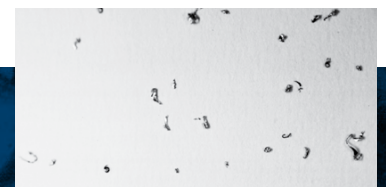
• Non-stock product, contact Customer Service for lead times and minimum order quantities.

TIGER ALUMINUM GRINDS COOL, CUTS FAST

Tiger Aluminum releases a lubricant which reduces heat buildup and loading on the disc, allowing grains to sustain a high rate and aggressively remove material.



Metal shavings from Tiger Aluminum disc.



Metal shavings from a conventional disc.

CUTTING & GRINDING WHEELS

NON-LOADING WHEELS: Tiger Aluminum is a new line of cutting, grinding, and combination wheels that deliver a non-loading solution that maximizes cut rates, increasing productivity when working with aluminum.



These wheels leverage a unique blend of abrasive grains and contaminant-free additives that work to prevent loading, resulting in higher cut rates and long wheel life.

Tiger delivers high performance on aluminum:

- **Non-loading** formula keeps the wheel from gumming up, allowing operators to get more work done in less time without compromising durability.
- Silicon carbide and aluminum oxide blend delivers a **consistently high cut rate** throughout the life of the wheel.
- **Extended wheel life** on aluminum reduces changeovers and lowers cost of use.
- **Contaminant-free** wheels deliver a worry-free solution for aluminum applications.

APPLICATIONS: Aluminum Cutting, Grinding, Heavy Stock Removal, Weld Removal, Weld Blending, Beveling and Chamfering

Delivers a
FAST CUT
for the life of the wheel

LONG WHEEL LIFE
reduces changeovers
and lowers cost of use

NON-LOADING ON ALUMINUM
allows operators to get
more work done in less time

TIGER ALUMINUM CUTTING WHEELS* / Silicon Carbide & Aluminum Oxide / Non-Loading

Tiger Aluminum wheels are specifically designed for high performance cutting on aluminum. These wheels blend abrasive grains with Weiler's non-loading formula, resulting in a fast and consistent cut rate on aluminum.



Dia.	Thickness	Grade	Max. RPM	TYPE 1 7/8" Arbor			TYPE 27 7/8" Arbor			TYPE 27 5/8"-11 Hub		
				Std. Pack	MFG #	FAST #	Std. Pack	MFG #	FAST #	Std. Pack	MFG #	FAST #
4-1/2"	.045"	ALU60S	13,300	25	58200	0882254	25	58205	0882258	10	58206	0882259
5"	.045"	ALU60S	12,200	25	58201	0882255	—	—	—	—	—	—
6"	.045"	ALU60S	10,200	25	58202	0882256	25	58209	0882262	10	58210	0882263
7"	.060"	ALU60S	8,500	25	58203	0882257	—	—	—	—	—	—

*Contaminant-free, contains less than 0.1% Fe, S, Cl



0882256

TIGER ALUMINUM GRINDING WHEELS* / Silicon Carbide & Aluminum Oxide / Non-Loading

Tiger Aluminum wheels are specifically designed for high performance grinding and extended wheel life on aluminum.

These wheels blend abrasive grains with Weiler's non-loading formula, resulting in a fast and consistent cut rate on aluminum.



Dia.	Thickness	Grade	Max. RPM	TYPE 27 7/8" Arbor			TYPE 27 5/8"-11 Hub		
				Std. Pack	MFG #	FAST #	Std. Pack	MFG #	FAST #
4-1/2"	1/4"	ALU24R	13,300	10	58225	0882274	10	58226	0882275
5"	1/4"	ALU24R	12,200	10	58227	0882276	10	58228	0882277
6"	1/4"	ALU24R	10,200	10	58229	0882278	10	58230	0882279

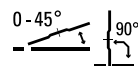
*Contaminant-free, contains less than 0.1% Fe, S, Cl



0882274

TIGER ALUMINUM COMBO WHEELS* / Silicon Carbide & Aluminum Oxide / Non-Loading

Cut & grind combo wheels deliver true flexibility and efficiency when switching between cutting and grinding aluminum applications. These wheels blend abrasive grains with Weiler's non-loading formula, resulting in a fast and consistent cut rate on aluminum.



Dia.	Thickness	Grade	Max. RPM	TYPE 27 7/8" Arbor			TYPE 27 5/8"-11 Hub		
				Std. Pack	MFG #	FAST #	Std. Pack	MFG #	FAST #
4-1/2"	1/8"	ALU30T	13,300	25	58215	0882266	10	58216	0882267

*Contaminant-free, contains less than 0.1% Fe, S, Cl



0882267

ALUMINUM ALLOYS

An aluminum alloy is a chemical composition where other elements are added to pure aluminum in order to enhance its properties, primarily to increase its strength. These other elements include iron, silicon, copper, magnesium, manganese and zinc at levels that combined may make up as much as 15 percent of the alloy by weight. Alloys are assigned a four-digit number, in which the first digit identifies a general class, or series, characterized by its main alloying elements.

3000 SERIES

Good Corrosion Resistance

Fair Strength

USES: Roofing, Siding, Gutters

5000 SERIES

Good Corrosion Resistance

Good Strength

USES: Marine Applications

6000 SERIES

Good Corrosion Resistance

Excellent Strength

USES: Structural, Pipe

FLAP DISCS FOR GRINDING & FINISHING

Weiler's abrasive flap discs grind and finish in one step, saving you time and money. There's no switching from a Type 27 grinding wheel to a resin fiber disc.



STYLE

CONICAL (Type 29)

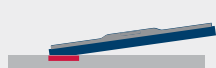
15° – 35°



The angled flaps maximize surface contact for aggressive stock removal on flat surfaces.

FLAT (Type 27)

0° – 15°



Smooth grinding, blending and finishing on flat surfaces and slight contours.

HIGH DENSITY (Type 27)

0° – 15°



Conformable to irregular surfaces. Smooth grinding, blending and finishing on flat surfaces.

ANGLED (Type 27 / Hybrid)

0° – 35°



Curved flaps for grinding fillet welds, T-joints, and hard-to-reach areas.



Tiger Aluminum flap discs offer an innovative paired flap design that delivers high performance grinding on aluminum. The top flaps are coated to eliminate loading and allow the disc to maintain a high cut-rate, while the alternating flaps aggressively remove material with self-sharpening zirconia aluminum grains. This unique paired flap design delivers the ultimate combination of high performance grinding for aluminum at an exceptional value.



PAIRED FLAP DESIGN

Delivers High Performance Grinding on Aluminum

SELF SHARPENING

Zirconia Alumina Grains Deliver Aggressive Grinding

COATED FLAPS

Eliminate Loading

Coarse
36 Grit

Ideal for chamfering, beveling, weld removal and stock removal

Fine
60 Grit

Ideal for weld blending, finishing and cosmetic detail work

CONICAL

HIGH PERFORMANCE / TIGER® ALUMINUM

Non-Loading / Contaminant-free / Zirconia Alumina / Phenolic Back

ALUMINUM				TYPE 29 7/8" Arbor		TYPE 29 5/8"-11 Hub	
Diameter	Grit	Max. RPM	Std. Pack	MFG #	FAST #	MFG #	FAST #
4-1/2"	36	13,000	10	51250	922474043	51254	922474040
	60			51251	922474045	51255	922474047

FLAT

HIGH PERFORMANCE / TIGER® ALUMINUM

Non-Loading / Contaminant-free / Zirconia Alumina / Phenolic Back

ALUMINUM				TYPE 27 7/8" Arbor		TYPE 27 5/8"-11 Hub	
Diameter	Grit	Max. RPM	Std. Pack	MFG #	FAST #	MFG #	FAST #
4-1/2"	36	13,000	10	51252	922474041	51256	922474044
	60			51253	922474042	51257	922474046



922474043



922474046



Tiger Ceramic Saber Tooth flap discs deliver maximum performance on aluminum and other hard to grind non-ferrous metals. A grinding aid protects high value parts from heat discoloration and the self-sharpening ceramic alumina grain provides cool, fast-cutting action, allowing you to do more work, more quickly. Discs are contaminant-free, with iron, sulfur and chlorine less than 0.1%.



CONTAMINANT FREE
CONTAIN LESS THAN 0.1%
IRON, SULFUR & CHLORINE

TIGER CERAMIC FLAP DISCS / Ceramic Alumina / Conical Style (Type 29) / Phenolic Backing

The conical shape of the disc maximizes surface contact for aggressive stock removal on flat surfaces.

Diameter	Grit Size	Max. RPM	Std. Pack	7/8" Arbor		5/8"-11 Hub	
				MFG #	FAST #	MFG #	FAST #
4-1/2"	36	13,000	10	50100	0839100	50104*	0839104
	40			50101	0839101	50105*	0839105
	60			50102	0839102	50106*	0839106
	80			50103	0839103	50107*	0839107
7"	36	8,600	10	—	—	50112*	0839112
	40			50109	0839109	50113*	0839113

*Patent # 6,945,863



0839102

TIGER CERAMIC HIGH DENSITY (HD) FLAP DISCS

Ceramic Alumina / Flat Style (Type 27) / Phenolic Backing

High Density discs are conformable to irregular surfaces. Smooth grinding, blending and finishing on flat surfaces.

Diameter	Grit Size	Max. RPM	Std. Pack	7/8" Arbor		5/8"-11 Hub	
				MFG #	FAST #	MFG #	FAST #
4-1/2"	40	13,000	10	50130	0868077	50133*	0868080
	60			50131	0868078	50134*	0868081
	80			50132	0868079	50135*	0868082
7"	40	8,600	10	50136	99061334	50139*	99061337
	60			—	—	50140*	0868083
	80			—	—	50141*	0868084

*Patent # 6,945,863



99061337

TIGER CERAMIC TRIMMABLE FLAP DISCS

Ceramic Alumina / Conical Style (Type 29) / Composite Backing

Weiler's Trimmable Tiger flap discs are designed for hard-to-reach areas such as fillet welds and irregular shapes while grinding on-edge without changing tools. The unique composite backing can be trimmed, exposing more abrasive material and extending disc life, resulting in lower grinding and finishing costs.

Diameter	Grit Size	Max. RPM	Std. Pack	7/8" Arbor		5/8"-11 Hub	
				MFG #	FAST #	MFG #	FAST #
4-1/2"	40	13,000	10	50117	0839117	50121*	0839121
	60			50118	0839118	50122*	0839122

*Patent # 6,945,863



0839121

TIGER CERAMIC ANGLED FLAP DISCS

Ceramic Alumina / Hybrid Style / Phenolic Backing

Tiger Angled flap discs deliver an aggressive, long life solution for grinding fillet welds, T-joints and other hard-to-reach places. Top-sized ceramic alumina grain offers a contaminant-free option that grinds cool, delivering maximum performance on aluminum and other hard-to-grind metals.

Diameter	Grit Size	Max. RPM	Std. Pack	7/8" Arbor		5/8"-11 Hub	
				MFG #	FAST #	MFG #	FAST #
4-1/2"	40	13,000	10	51312	0829387	51315	0829390
	60			51313	0829388	51316	0829391
	80			51314	0829389	51317	0829392
	60			51318	0829393	51321	0829396
5"	40	12,000	10	51319	0829394	51322	0829397



0829393

NON-WOVEN FOR FINISHING

Weiler's non-woven products help you get the most demanding jobs done right and done fast.



99061479

Interleaf flap wheels provide a combination of non-woven and coated abrasive material to produce a very conformable product designed to be a finishing and surface blending tool. They are ideal for producing satin or decorative finishes on irregular or contoured surfaces.

APPLICATIONS: Decorative Finishing, Satin and Antique Finishes, Final Sanding, Soft Metal Finishing, Fine Burr Removal



STEM-MOUNTED INTERLEAF FLAP WHEELS / Aluminum Oxide

Diameter	Face Width	Grit Size	Stem Size	Max. RPM	Standard Pack	MFG #	FAST #
2"	1"	120	1/4"	13,700	10	54500	0868172
		180				54501	0868173
		320				54502	99061475
3"	1"	120	1/4"	8,600	5	54506	0868174
		180				54507	99061476
		320				54508	99061477
3"	2"	120	1/4"	8,600	5	54509	99061478
		180				54510	99061479



0868178

0868177

For cleaning and conditioning surfaces by hand. Unlike steel wool, hand pads are non-metallic, and do not produce "after-rust" on work surfaces. Hand pads can be used in wet applications.

HAND PADS

Size	Grain	Grade	Description	Standard Pack	MFG #	FAST #
Industrial Grade: For producing satin finishes, light deburring surface prep, blend light scratches						
6" x 9"	Silicon Carbide	Ultra Fine	Finishing (Grey)	60	51434	99061409
6" x 9"	Aluminum Oxide	Medium	Economy General Purpose (Maroon)	60	51460	0868178
6" x 9"	Aluminum Oxide	Med/ Coarse	General Purpose (Maroon)	60	51444	0868175
6" x 9"	Aluminum Oxide	Heavy-Duty	Heavy-Duty (Tan)	40	51454	0868176
Commercial Grade: For cleaning and removing stains, removing corrosion and oxidation						
6" x 9"	Aluminum Oxide	Fine	Economy (Green)	400	51456	99061410
6" x 9"	Aluminum Oxide	Medium	Standard-Duty (Green)	60	51457	0868177

Surface conditioning discs have an open construction, scrim reinforcement and a superior resin system. These features minimize loading, heat buildup, fraying of disc edges, grain shedding and extend disc life, providing superior performance.

APPLICATIONS: Light Deburring, Surface Finishing, Blending Light Scratches



0811861

TYPE R HUB STYLE CONDITIONING DISCS / General Purpose

Compatible with 3M Roloc™ back-up pads.



Diameter	Grade	Standard Pack	MFG #	FAST #
2"	Very Fine (Blue)	50	51530	0868185
	Medium (Maroon)		51531	0868186
	Coarse (Brown)		51532	0811861
3"	Very Fine (Blue)	25	51533	0868187
	Medium (Maroon)		51534	0811862
	Coarse (Brown)		51535	5138-51535

POWER BRUSHES FOR CLEANING

Superior construction, the highest quality materials, state-of-the-art manufacturing, and exacting quality standards deliver the most consistent brush performance. Each Weiler brush is designed to provide the best performance at the lowest cost-of-use.



WIRE SELECTION

To maximize brush life and reduce costs, always use the finest wire that will get the job done without excessive applied pressure or engagement with the brush.

Coarse			Medium			Fine		Very Fine	
.035	.023	.020	.014	.0118	.0104	.0095	.008	.006	.005
LESS			Flexible					MORE	
MORE			Aggressive					LESS	
LESS			Resistant to Fatigue & Breakage					MORE	

FILL SELECTION



Stainless Steel Wire

Recommended for cleaning surfaces before welding to eliminate naturally occurring oxide layer.



Non-Ferrous Wire

(Brass, Bronze & Aluminum)
Can be used on aluminum to create decorative antique finishes.

CIRCULAR FLARED END BRUSHES / 302 Stainless Steel / 1/4" Stem

Features crimped wire fill that has been "pre-flared" to match the working angle of the brush at operating speed; suited for addressing broad and slightly contoured surfaces.

Diameter	Wire Size	Max. RPM	Standard Pack	MFG #	FAST #
1"	.006	25,000	1	10042	0824504
	.008			10043	0813393
1-1/2"	.006	20,000	1	10045	0813395
	.008			10046	0813396
2-3/4"	.008	16,000	2	10048	0824505
3"	.006	16,000	2	10151	0813409
	.008			10050	0813398



0813409

CRIMPED WIRE END BRUSHES / 302 Stainless Steel / Coated Cup / 1/4" Stem

Features a solid end construction and very flexible brushing action ideal for more demanding cleaning applications in corners and hard-to-reach areas. The plastic sleeve covering the cup protects the work surface from being scratched or marked.

Diameter	Wire Size	Trim Length	Overall Length	Max. RPM	Standard Pack	MFG #	FAST #
1/2"	.006	7/8"	2-9/16"	25,000	10	11010	0813436
3/4"	.006	7/8"	2-9/16"	22,000	10	11013	0813438
1"	.006	7/8"	2-3/4"	22,000	10	11016	0813440



0813438

CRIMPED WIRE END BRUSHES / 302 Stainless Steel / Nickel-plated Cup / 1/4" Stem

Features a solid end construction and very flexible brushing action ideal for more demanding cleaning applications in corners and hard-to-reach areas. **The nickel-plated cup is compliant with DOD MIL STD 2041D(SH).**

Diameter	Wire Size	Trim Length	Overall Length	Max. RPM	Standard Pack	MFG #	FAST #
3/4"	.006	7/8"	2-9/16"	22,000	10	10374	99060977
1"	.006	1"	2-7/8"	22,000	10	10378	0868238



0868238

• Non-stock product, contact Customer Service for lead times and minimum order quantities.

CONTROLLED FLARE END BRUSHES* / 302 Stainless Steel

Features uniquely trimmed crimped wire fill for more effective brushing action and greatly enhanced durability when cleaning corners and fillet welds.



99060970

Diameter	Wire Size	Trim Length	Overall Length	Max. RPM	Standard Pack	MFG #	FAST #
1/2"	.0104	7/8"	2-9/16"	25,000	10	10313	0811725
3/4"	.0104	7/8"	2-9/16"	22,000	10	10317	99060967
1"	.0104	1"	2-7/8"	22,000	10	10321	99060970

*Patent #8,186,000 B2

CRIMPED WIRE PILOT BONDING BRUSHES

302 Stainless Steel / Banded / Solid End / 1/4" Stem

Originally designed to clean around rivet holes in aluminum aircraft panels but may be used in other similar applications.



0813399

Diameter	Wire Size	Trim Length	Overall Length	Pilot Diameter	Max. RPM	Standard Pack	MFG #	FAST #
1/2"	.005	3/8"	2-1/4"	3/32"	20,000	10	10056	0813399
1/2"	.005	3/8"	2-1/4"	1/8"	20,000	10	10057	0813400
1/2"	.005	3/8"	2-1/4"	5/32"	20,000	10	10058	0813401
1/2"	.005	3/8"	2-1/4"	3/16"	20,000	10	10059	0813402

CONFLEX BRUSHES / 302 Stainless Steel / 1/4" Stem

Provides a flexible brushing action and consistent performance for demanding light-duty cleaning and deburring applications; features a wider face width to cover more area.



0813713

Diameter	Wire Size	Face Width	Trim Length	Max. RPM	Standard Pack	MFG #	FAST #
1-3/4"	.008	1/2"	5/8"	20,000	10	17608	0813713
3"	.008	1"	15/16"	20,000	10	17637	0813721

CONCAVE BRUSHES / 302 Stainless Steel / 1/4" Stem

Provides flexible brushing action for addressing corners and hard-to-reach areas.



0813740

Diameter	Wire Size	Face Width	Trim Length	Max. RPM	Standard Pack	MFG #	FAST #
1-1/2"	.006	1/4"	3/8"	20,000	10	17930	0813740
3"	.006	1/2"	15/16"	20,000	10	17936	0813744

UTILITY CRIMPED WIRE CUP BRUSHES / 302 Stainless Steel / 1/4" Stem

Provides flexible brushing action and consistent performance for more demanding light-duty cleaning applications.



0813641

Diameter	Wire Size	Trim Length	Overall Length	Max. RPM	Standard Pack	MFG #	FAST #
1-3/4"	.006	3/4"	2-5/16"	13,000	10	14303 •	0813641 •
2"	.008	5/8"	2-7/8"	13,000	10	14318 •	99060990 •
2-1/2"	.008	7/8"	3-1/8"	13,000	10	14320 •	99060992 •

302 STAINLESS STEEL

Weiler's stainless steel wire brushes are manufactured using wire drawn from Type 302 stainless steel. Although 302 stainless is typically a non-magnetic material, it is important to remember that the amount of cold-working that it experiences during the wire-drawing process causes it to become magnetic. For this reason, proper storage and handling of stainless steel brushes is critical to prevent cross-contamination and

"after rust" issues. Type 302 is widely used in the manufacture of power brushes for its relative durability and aggressive action as well as for its austenitic properties that insure the corrosion resistance of the materials on which it is applied. The use of a different grade of stainless steel wire is typically required in critical weld preparation and cleaning applications, but it will not address "after rust" and other cross-contamination issues.

SMALL DIAMETER WHEELS / 302 Stainless Steel

These wheels provide a flexible brushing action and consistent performance for light-duty cleaning and deburring applications requiring a small wheel. Ideal for wire stripping and thread cleaning.



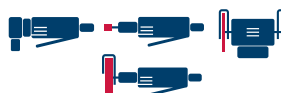
Diameter	Wire Size	Arbor Hole	Face Width	Trim Length	Max. RPM	Standard Pack	MFG #	FAST #
1"	.003 .005	1/4"	3/16"	1/4"	20,000	10	16461 16471	0813688 0813689
1-1/4"	.008	1/4"	1/4"	3/8"	20,000	10	16521	0813690
1-1/2"	.006 .008	3/8"	1/4"	7/16"	20,000	10	16702 16712	0813691 0813692
2"	.005 .008	1/2"	3/8"	3/4"	20,000	10	16833 16843	0813693 0813694
3"	.006 .008	1/2"-3/8"	5/8"	1"	20,000	10	16933 16943	0813698 0824510



0813692

TAMPICO WHEELS / Tampico Fiber

Ideal for light-duty surface cleaning and scrubbing applications as well as scratch-free finishing and polishing. Natural fiber such as Tampico holds abrasive compounds well and can be used for deburring, edge blending, and polishing applications.



Diameter	Arbor Hole	Face Width	Trim Length	Max. RPM	Standard Pack	MFG #	FAST #
3"	1/2"	1/2"	1"	20,000	10	17453	0813705
6"	2"	5/8"	1-1/2"	6,000	10	20180	0813746
8"	2"	5/8"	2-1/2"	5,000	5	20190	0813747



0813705

0813746

PLATER'S WIRE WHEELS / Brass

These wheels feature a longer trim length and very small diameter wire size for producing fine satin and antique finishes on non-ferrous and precious metals.



Diameter	Wire Size	Arbor Hole	Face Width	Trim Length	Max. RPM	Standard Pack	MFG #	FAST #
4"	.004	1/4"	1"	1-1/4"	4,000	5	22061 •	0813907 •



0813907

STANDARD TWIST BEVEL BRUSHES / 302 Stainless Steel

These wheels provide a heavy-duty brushing action with some flexibility; ideal for cleaning fillet welds and corners.



Diameter	Wire Size	Arbor Hole	Face Width	Trim Length	Max. RPM	Standard Pack	MFG #	FAST #
4"	.014	5/8"-11 UNC	3/8"	3/4"	12,500	1	13416	0813597
4-1/2"	.014	5/8"-11 UNC	3/8"	1"	12,500	1	13466	0813621



0813597

CRIMPED WIRE WHEEL / 302 Stainless Steel

Brush provides a flexible brushing action and consistent performance for demanding light-duty cleaning and deburring applications.



Diameter	Wire Size	Arbor Hole	Face Width	Trim Length	Max. RPM	Standard Pack	MFG #	FAST #
4"	.006	5/8"-11 UNC	1/2"	7/8"	14,000	5	00156	0811740



0811740

• Non-stock product, contact Customer Service for lead times and minimum order quantities.

SCRATCH BRUSHES FOR CLEANING

Weiler's scratch brush offering includes many block and handle types and sizes. Common applications include cleaning dirt, rust, scale, chips and paint; plating and welding operations.



PLATER'S BRUSHES / 302 Stainless Steel / Hardwood Block

For general cleaning in the plating, metal finishing, aircraft and missile industries. Also used with inert arc aluminum welding.

Block Size	Brush Length	Number of Rows	Trim Length	Standard Pack	MFG #	FAST #
.006 Stainless Steel Wire						
10" x 1-1/8"	5"	4 x 18	1"	12	44240	5138-44240
13" x 7/8"	5-1/2"	3 x 19			44660	0814130
13" x 1-1/8"	5-1/2"	4 x 19			44232	0814114



0824516



99061257



0814255

SMALL HAND SCRATCH BRUSHES / 302 Stainless Steel

Ideal for cleaning and prepping surfaces.

FAST #	Block	Number of Rows	Trim Length	Standard Pack	MFG #	FAST #
.006 Stainless Steel Wire						
7-1/2" x 1/2"	Plastic	3 x 7	1/2"	36	44075	0824516
7-1/2" x 1/2"	Wood	3 x 7	1/2"		44167	5138-44167
7-3/4" x 3/8"	Wood	3 x 7	1/2"		44551*	99061257
8-3/4" x 1/2"	Wood	2 x 9	5/8"		95013	0814253
.008 Crimped Aluminum						
6-3/4" x 1-5/8"	Wood	6 x 9	5/8"	12	95151	0814255
8-3/4" x 1/2"	Wood	2 x 9	5/8"	36	44251	0814116

*Wire drawn

To discuss specific requirements with a product specialist please reach out to your local Fastenal Representative or call 877.507.7555

FASTENAL® 877.507.7555 / fastenal.com

